

CONTRACT NO. B-14554

INDEX					
PROJECT	STRUCTURE	TYPE	SPAN	OVER	STATION
FR-062-5(3)	46-03-4175A	DECK RECONSTRUCTION AND OVERLAY	3 @ 28'-0" SKEW 45° LT.	STONEY LONESOME CREEK	545+70
SHEET NO.	SHEET DESIGNATION	SUBJECT			F.H.W.A. APPROVAL
1		TITLE SHEET AND INDEX			
2-3		TRAFFIC MAINTENANCE LAYOUT			
4	RI				
5	R2	GENERAL PLAN			
6	R3	DETAILS			
7	R4	WIDENED R.C. APPROACH PAVEMENT			
8		BRIDGE ESTIMATE OF QUANTITIES			

## INDIANA DEPARTMENT OF HIGHWAYS

# BRIDGE PLANS

## FOR SPANS OVER 20 FEET ON

### STATE ROAD NO. 46

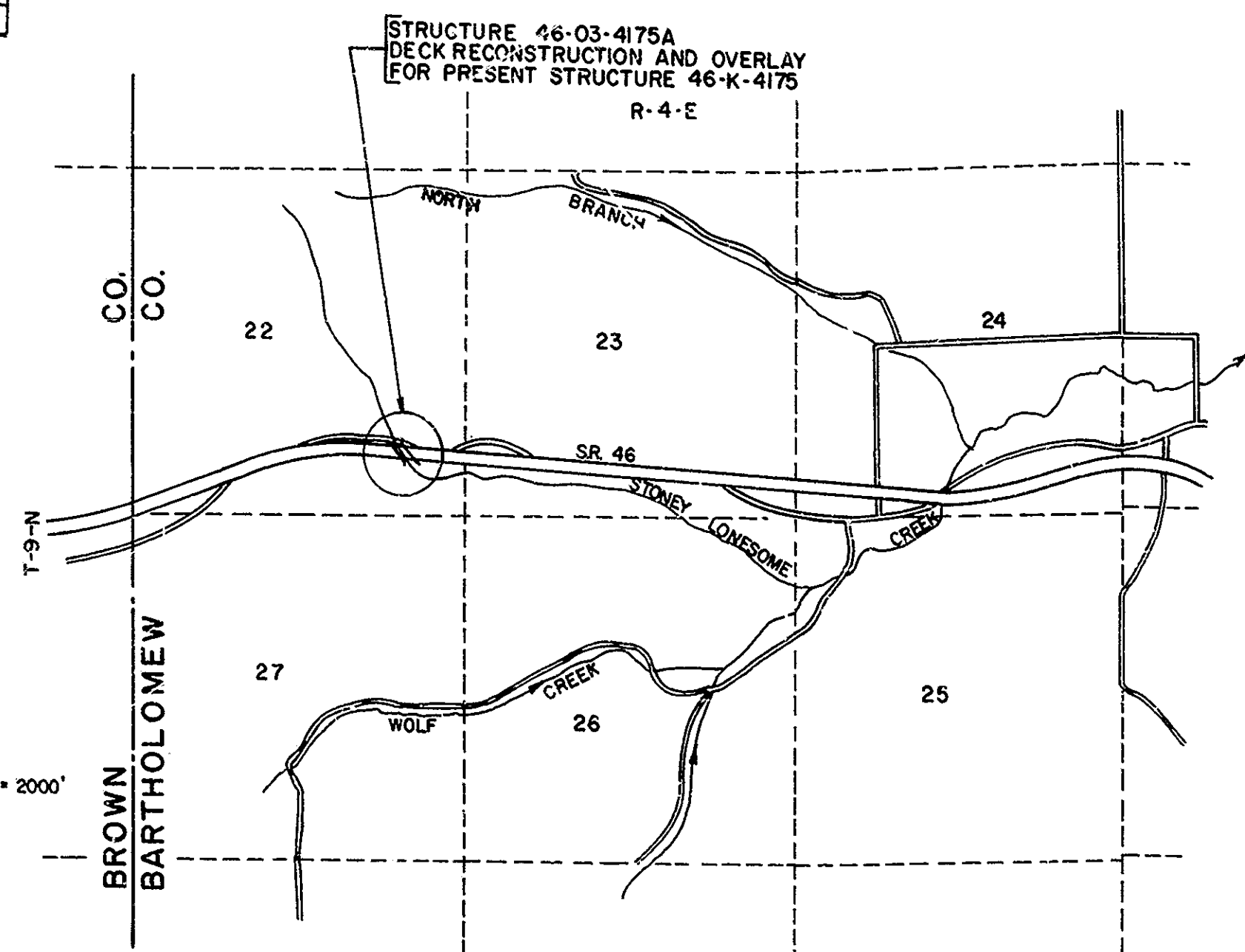
### PROJECT NO. FR-062-5(3)

DECK RECONSTRUCTION AND OVERLAY FOR BRIDGE ON S.R. 46  
OVER STONEY LONESOME CREEK IN BARTHOLOMEW COUNTY

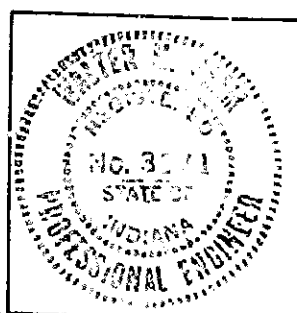
BRIDGES OVER 20' SPAN				
FISCAL YEAR	STATE	PROJECT NO.	FISCAL YEAR	SHEET NO.
5	IND.	FR-062-5(3)	1985	1

INDEX CONTINUED					
STANDARD DRAWINGS			ADDITIONAL REVISIONS		
SHEET NO.	SHEET DESIGNATION	SUBJECT	F.H.W.A. APPROVAL	DATE	REVISION NO.
	BRIDGE STD. BR1	ALUMINUM BRIDGE RAILING			
	BRIDGE STD. BR2	ALUMINUM BRIDGE RAILING DETAILS			
	BRIDGE STD. BR3	STEEL BRIDGE RAILING			
	BRIDGE STD. BR4	STEEL BRIDGE RAILING DETAILS			
	BRIDGE STD. BR5	RAILING CONNECTION DETAILS			
	BRIDGE STD. BR6	RAILING CONNECTION DETAILS			
9	BRIDGE STD. C1	MISCELLANEOUS DETAILS			
	BRIDGE STD. C2	MISCELLANEOUS DETAILS	12-21-84		R12-7-84
	BRIDGE STD. C3	MISCELLANEOUS DETAILS			
	BRIDGE STD. C4	MISCELLANEOUS DETAILS			
	BRIDGE STD. D	CASTING DETAILS ROADWAY DRAINS			
	BRIDGE STD. D1	ADJUSTING FRAME DETAILS FOR ROADWAY DRAINS			
	BRIDGE STD. D2	ADJUSTING FRAME DETAILS FOR ROADWAY DRAINS			
	BRIDGE STD. PB	PRESTRESSED CONCRETE TYPE I-BEAMS			
	BRIDGE STD. PB	PRESTRESSED CONCRETE TYPE I-BEAMS			
	BRIDGE STD. PB6	PRESTRESSED BOX BEAMS			
	BRIDGE STD. PB	PRESTRESSED COMPOSITE BOX BEAMS WIDE			
	BRIDGE STD. PB	PRESTRESSED COMPOSITE BOX BEAMS WIDE			
	BRIDGE STD. PB10	TOLERANCES FOR FABRICATION OF PRESTRESSED BEAMS			
	BRIDGE STD. PB11	ELASTOMERIC BEARING PAD DETAILS			
	BRIDGE STD.				
	BRIDGE STD. R2A	BRIDGE LIGHTING DETAILS			
	BRIDGE STD. R2B	BRIDGE LIGHTING DETAILS			
	BRIDGE STD. S1	MISCELLANEOUS DETAILS			
	BRIDGE STD. SH1	STEEL SHOE DETAILS			
	BRIDGE STD. T SHEET A	STANDARD TEMPORARY BRIDGE			
	BRIDGE STD. T SHEET B	STANDARD TEMPORARY BRIDGE			
	BRIDGE STD.				
	BRIDGE STD.				
	BRIDGE STD.				
	BRIDGE STD.				
10	ROAD STD. SHEET A	STANDARD PAVEMENT JOINTS		4-10-84	R-2-1-84
	ROAD STD. SHEET B	STANDARD PAVEMENT JOINTS			
	ROAD STD. SHEET C	MISCELLANEOUS STANDARDS			
11	ROAD STD. SHEET ME	MISCELLANEOUS STANDARDS		5-21-84	R-4-1-84
	ROAD STD. SHEET	MISCELLANEOUS STANDARDS			
	ROAD STD. SHEET	MISCELLANEOUS STANDARDS			
	ROAD STD. SHEET	MISCELLANEOUS STANDARDS			
	ROAD STD. SHEET	MISCELLANEOUS STANDARDS			
	ROAD STD. SHEET	MISCELLANEOUS STANDARDS			
	ROAD STD. SHEET	MISCELLANEOUS STANDARDS			
	ROAD STD. SHEET	MISCELLANEOUS STANDARDS			
	ROAD STD. SHEET	MISCELLANEOUS STANDARDS			
	ROAD STD. SHEET	MISCELLANEOUS STANDARDS			
	ROAD STD. SHEET	MISCELLANEOUS STANDARDS			
	ROAD STD. SHEET	MISCELLANEOUS STANDARDS			
	ROAD STD. SHEET	MISCELLANEOUS STANDARDS			
	ROAD STD. SHEET	MISCELLANEOUS STANDARDS			
	ROAD STD. SHEET	MISCELLANEOUS STANDARDS			
	ROAD STD. SHEET	MISCELLANEOUS STANDARDS			
	ROAD STD. SHEET	MISCELLANEOUS STANDARDS			
	ROAD STD. SHEET	MISCELLANEOUS STANDARDS			
	ROAD STD. SHEET	MISCELLANEOUS STANDARDS			
	ROAD STD. SHEET	MISCELLANEOUS STANDARDS			
	ROAD STD. SHEET	MISCELLANEOUS STANDARDS			
	ROAD STD. SHEET	MISCELLANEOUS STANDARDS			
	ROAD STD. SHEET	MISCELLANEOUS STANDARDS			
	ROAD STD. SHEET	MISCELLANEOUS STANDARDS			
	ROAD STD. SHEET	MISCELLANEOUS STANDARDS			
	ROAD STD. SHEET	MISCELLANEOUS STANDARDS			
	ROAD STD. SHEET	MISCELLANEOUS STANDARDS			
12	ROAD STD. SHEET MT-3	MISCELLANEOUS STANDARDS		5-30-84	A7-82
	ROAD STD. SHEET	MISCELLANEOUS STANDARDS			
	ROAD STD. SHEET CR	GUARD RAIL CLASS			
	ROAD STD. SHEET CR	GUARD RAIL CLASS			
	ROAD STD. SHEET CR	GUARD RAIL CLASS			
	ROAD STD. SHEET CR	GUARD RAIL CLASS			
	ROAD STD. SHEET CR5	ALUMINUM GUARD RAIL DETAILS			
	ROAD STD. SHEET CR6	STEEL TUBE GUARD RAIL DETAILS			
	ROAD STD. SHEET CR7	GUARD RAIL PIER CONNECTION DETAILS			
	ROAD STD. SHEET CR8	STEEL BEAM GUARD RAIL			
	ROAD STD. SHEET CR9	ALUMINUM BEAM GUARD RAIL			
	ROAD STD. SHEET CR10	GUARD RAIL BURIED ENDS			
	ROAD STD. SHEET CR10A	GUARD RAIL BREAKAWAY CABLE TERN.		5-21-84	R-4-1-82
	ROAD STD.				
	ROAD STD. SHEET CB2	TEMPORARY CONCRETE BARRIER			
	TRAFFIC STD. SHEET 9	TRAFFIC SIGN DETAILS			
	ROAD STD. SHEET 1A DETOURS	STANDARD DETOUR SIGNS			
	ROAD STD. SHEET 1B DETOURS	STANDARD DETOUR SIGNS			
	ROAD STD. SHEET 2 DETOURS	STANDARD DETOUR SIGNS			
	ROAD STD. SHEET 2A DETOURS	STANDARD DETOUR SIGNS			
	ROAD STD. SHEET 2B DETOURS	STANDARD DETOUR SIGNS			
	ROAD STD. SHEET 2C DETOURS	STANDARD DETOUR SIGNS			
	ROAD STD. SHEET 2D DETOURS	STANDARD DETOUR SIGNS			
	ROAD STD. SHEET 2E DETOURS	STANDARD DETOUR SIGNS			
	ROAD STD. SHEET 2F DETOURS	STANDARD DETOUR SIGNS			
	ROAD STD. SHEET 2G DETOURS	STANDARD DETOUR SIGNS			
	ROAD STD. SHEET 2H DETOURS	STANDARD DETOUR SIGNS			
	ROAD STD. SHEET 2I DETOURS	STANDARD DETOUR SIGNS			
	ROAD STD. SHEET 2J DETOURS	STANDARD DETOUR SIGNS			
	ROAD STD. SHEET 2K DETOURS	STANDARD DETOUR SIGNS			
	ROAD STD. SHEET 2L DETOURS	STANDARD DETOUR SIGNS			
	ROAD STD. SHEET 2M DETOURS	STANDARD DETOUR SIGNS			
	ROAD STD. SHEET 2N DETOURS	STANDARD DETOUR SIGNS			
	ROAD STD. SHEET 2O DETOURS	STANDARD DETOUR SIGNS			
	ROAD STD. SHEET 2P DETOURS	STANDARD DETOUR SIGNS			
	ROAD STD. SHEET 2Q DETOURS	STANDARD DETOUR SIGNS			
	ROAD STD. SHEET 2R DETOURS	STANDARD DETOUR SIGNS			
	ROAD STD. SHEET 2S DETOURS	STANDARD DETOUR SIGNS			
	ROAD STD. SHEET 2T DETOURS	STANDARD DETOUR SIGNS			
	ROAD STD. SHEET 2U DETOURS	STANDARD DETOUR SIGNS			
	ROAD STD. SHEET 2V DETOURS	STANDARD DETOUR SIGNS			
	ROAD STD. SHEET 2W DETOURS	STANDARD DETOUR SIGNS			
	ROAD STD. SHEET 2X DETOURS	STANDARD DETOUR SIGNS			
	ROAD STD. SHEET 2Y DETOURS	STANDARD DETOUR SIGNS			
	ROAD STD. SHEET 2Z DETOURS	STANDARD DETOUR SIGNS			

TRAFFIC DATA			
A.D.T. (1978)			
A.D.T. (19 PROJECTED)	5900	V.P.D.	
D.H.V. (19 PROJECTED)		V.P.D.	
TRUCKS		V.P.D.	
DESIGN SPEED	D.H.V.	% A.D.T.	%
ACCESS CONTROL		M.P.H.	



PLANS PREPARED BY  
**FLOYD E. BURROUGHS & ASSOCIATES, INC.**  
CONSULTING ENGINEERS  
INDIANAPOLIS, INDIANA



CERTIFIED: *Walter J. Baum* DATE: JANUARY 12, 1984.

NOTE: WHEREVER "INDIANA STATE HIGHWAY COMMISSION" APPEARS IN THESE PLANS IT SHALL BE INTERPRETED AS "INDIANA DEPARTMENT OF HIGHWAYS" EXCEPT THE 1978 INDIANA STATE HIGHWAY COMMISSION STANDARD SPECIFICATIONS SHALL BE USED.

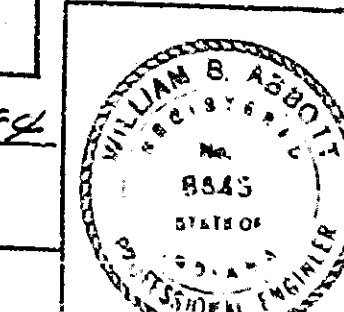
REVISIONS	
DATE	SHEET NO.

REVISIONS	
DATE	SHEET NO.

RECOMMENDED FOR APPROVAL \_\_\_\_\_

ENGINEER OF BRIDGE PLANS

RECOMMENDED FOR APPROVAL *2-17-84*  
*William B. Abbott*  
ENGINEER OF BRIDGE DESIGN



APPROVED 2-17-84

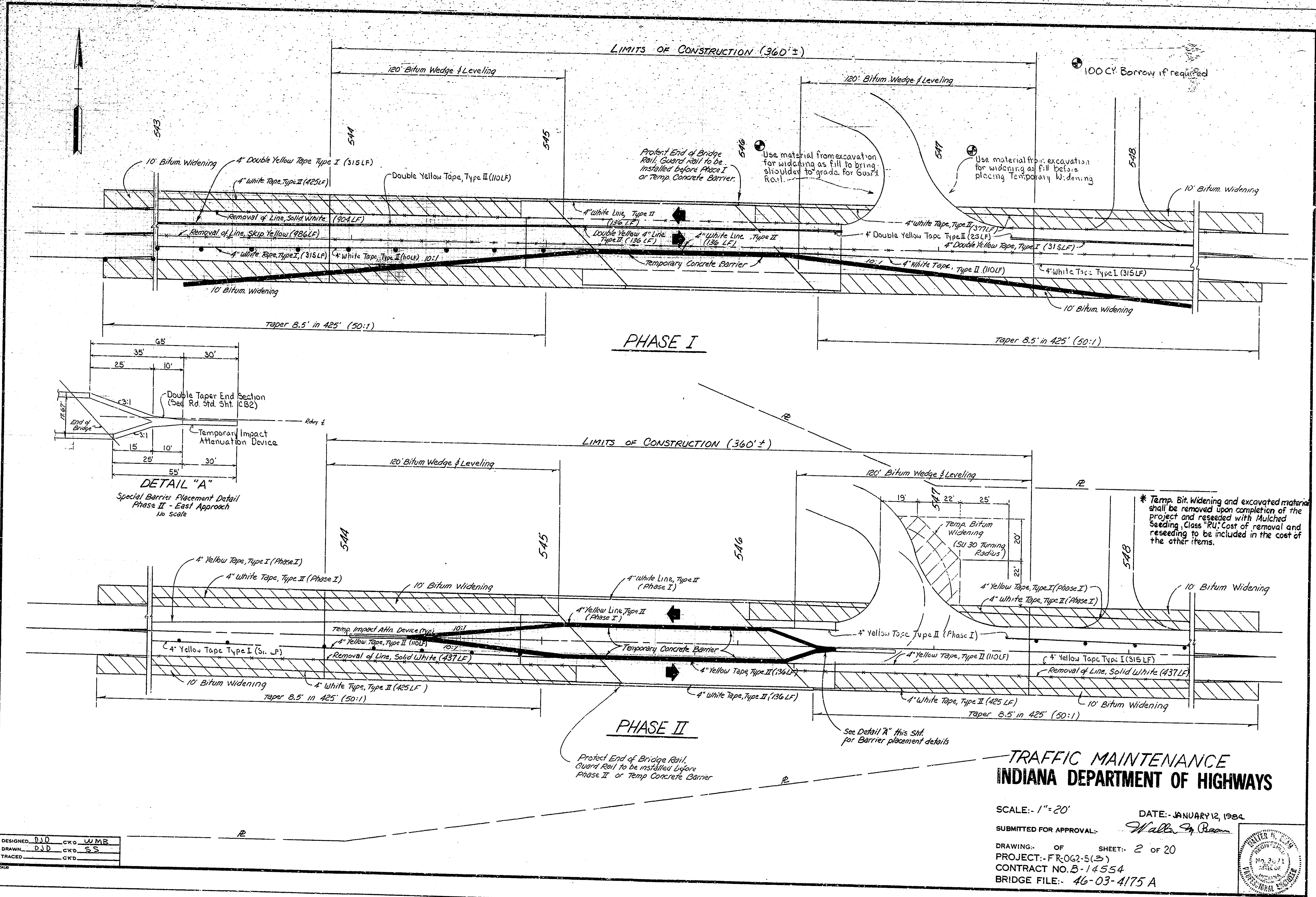
*Walter J. Baum*  
CHIEF HIGHWAY ENGINEER

FEDERAL HIGHWAY ADMINISTRATION  
DEPARTMENT OF TRANSPORTATION

APPROVED: \_\_\_\_\_  
DIVISION ADMINISTRATOR DATE

BRIDGE FILE: 46-03-4175A





DESIGNED: DJD CKD WMB  
 DRAWN: DJD CKD SS  
 TRACED: CKD

**TRAFFIC MAINTENANCE  
 INDIANA DEPARTMENT OF HIGHWAYS**

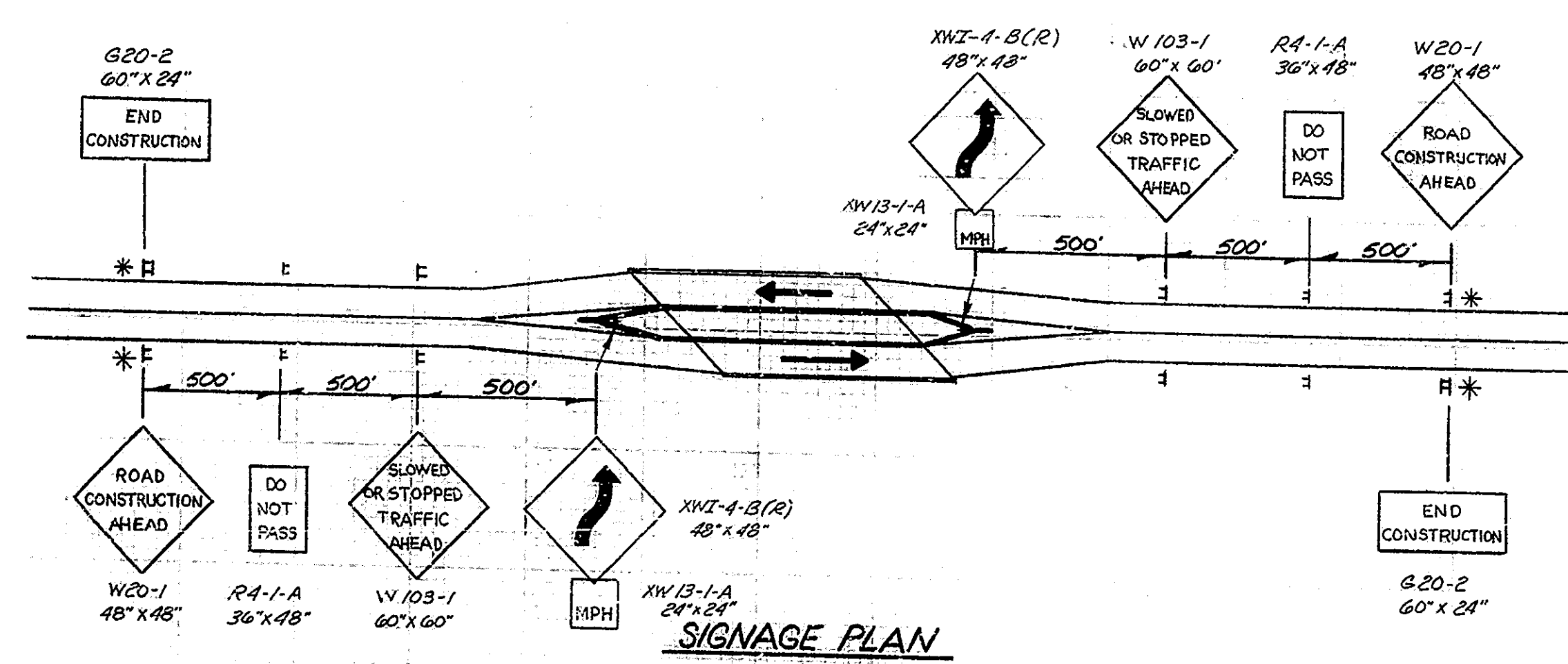
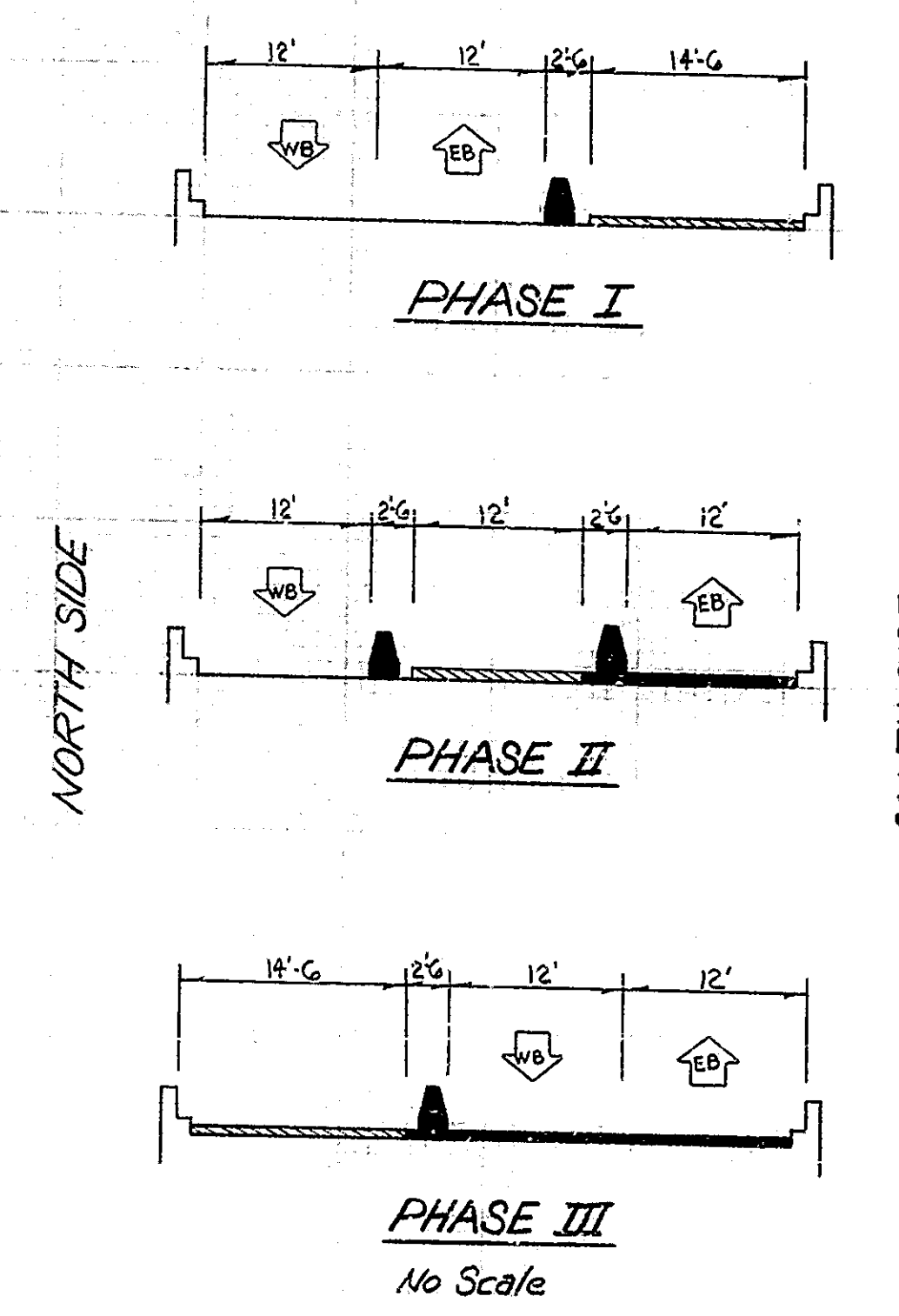
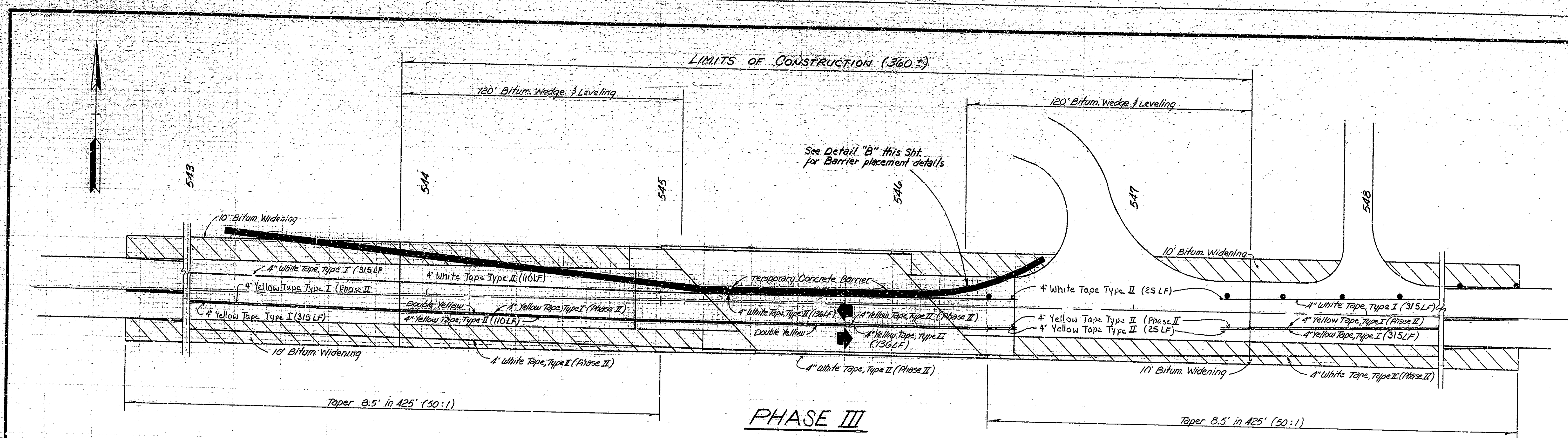
SCALE: 1" = 20' DATE: JANUARY 12, 1984

SUBMITTED FOR APPROVAL: *Walter S. Beaman*

DRAWING: OF SHEET: 2 OF 20  
 PROJECT: FR-062-5(3)  
 CONTRACT NO. B-14554  
 BRIDGE FILE: 46-03-4175 A







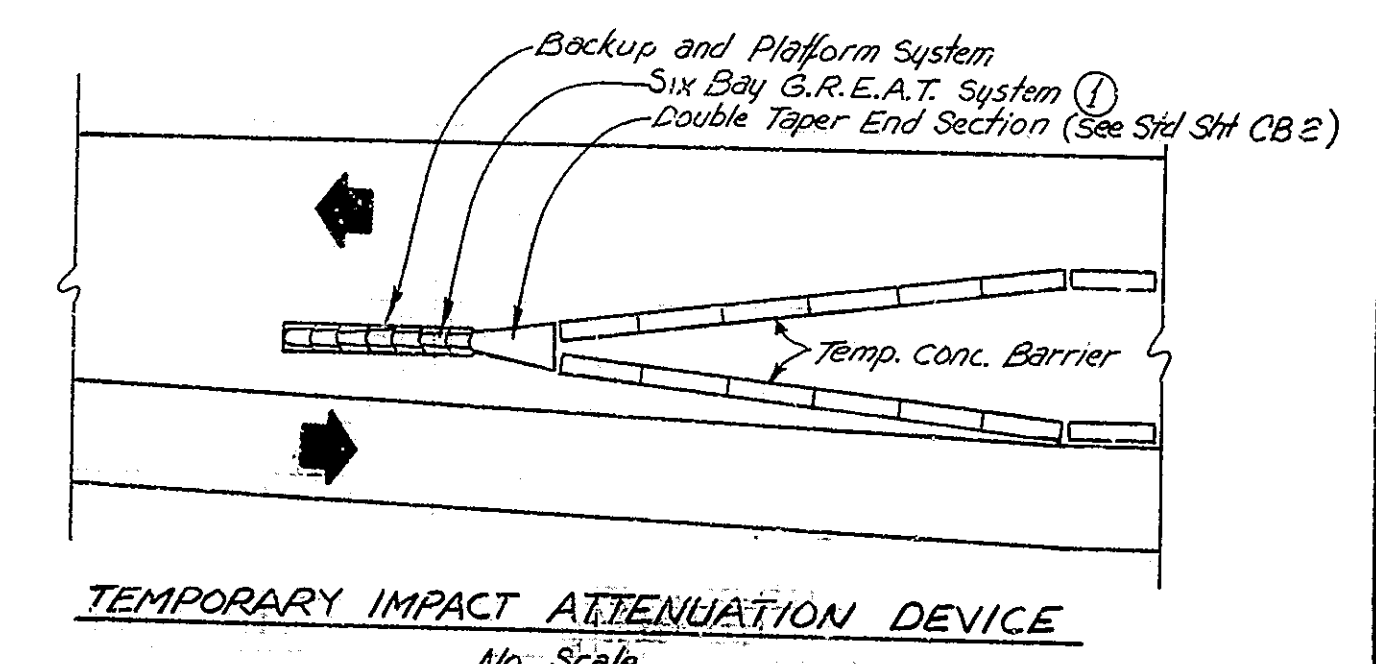
**ESTIMATED QUANTITIES**

1	LS	Maintaining Traffic (includes Drums or Type II Barricades)
690	LF	Temporary Concrete Barrier
16	EA	Construction Signs (Type A)
1	EA	Construction Signs (Type B)
3780	LF	Temporary Pavement Marking Type I
3720	LF	Temporary Pavement Marking Type II
370	LF	Removal of Line, Skip Yellow 4"
1788	LF	Removal of Line, Solid White 4"
1003	T	Bituminous Widening
2	EA	Temporary Impact Attenuation Device

Included in the pay item "Bituminous Mixture for Approaches"

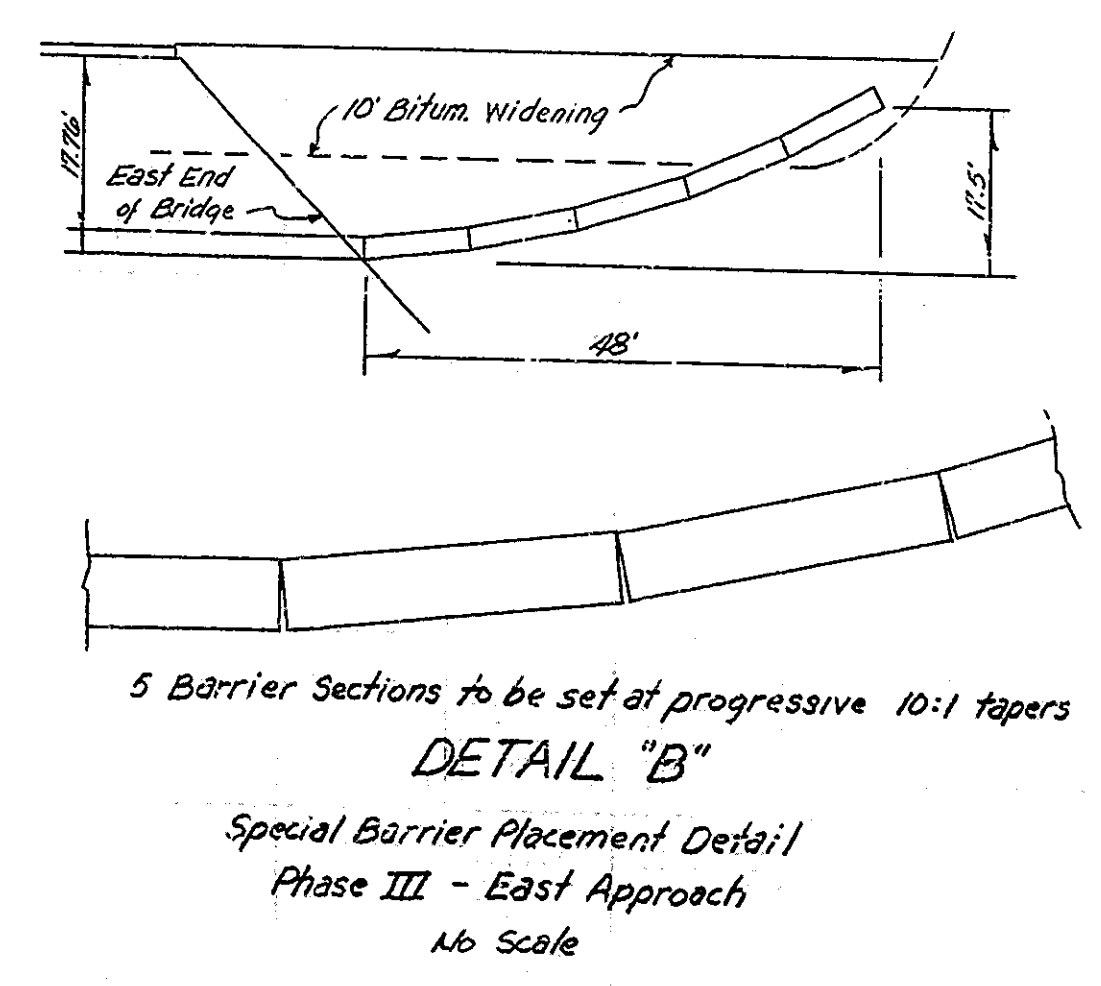
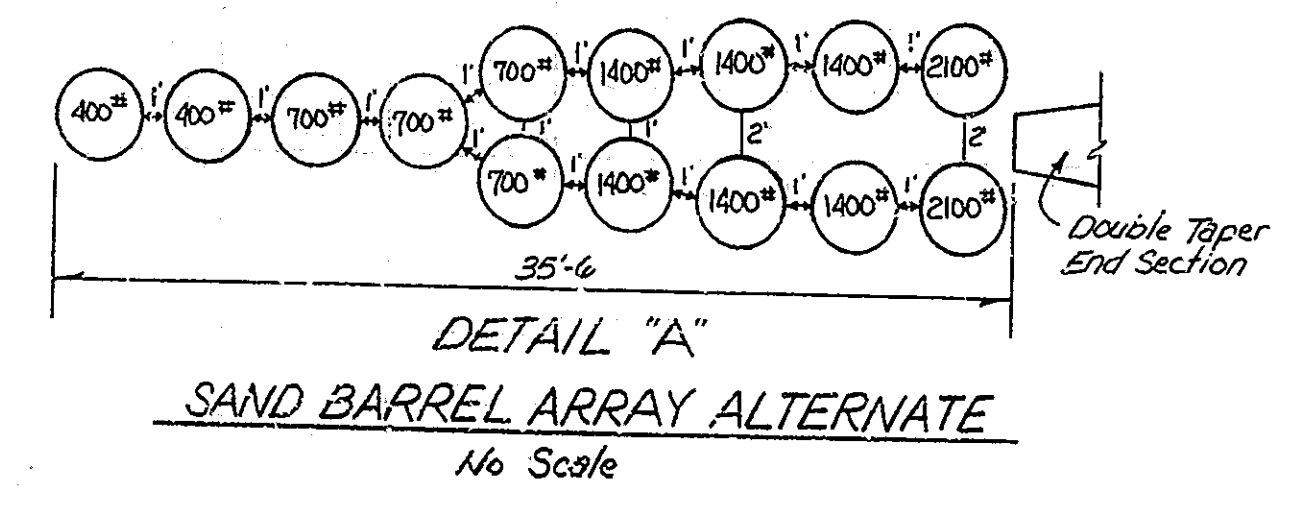
\* Low Intensity Flashing Yellow Light Type A

⊕ Metal Drum or Type II Barricade



Temporary Impact Attenuation Device shall be paid for "Each" and shall be either the "Sand Barrel Array" as manufactured by Fibco, Inc., Fitch Inertial Barrier, 15 Lewis Street Hartford Connecticut 06103, or "Energit Barrier" or a Six (6) Bay G.R.E.A.T. System manufactured by Energy Absorption Systems, Inc., 1 North Wacker Drive, Chicago, Illinois, 60611. These devices shall be installed in accordance with the manufacturer's specifications.

① For Alternate installation see Detail "A" below



**TRAFFIC MAINTENANCE**  
**INDIANA DEPARTMENT OF HIGHWAYS**

SCALE:- AS NOTED DATE:- JANUARY 12, 1984

SUBMITTED FOR APPROVAL:- *William M. Brown*

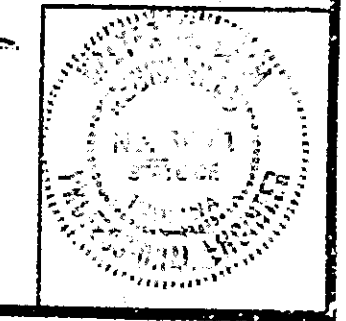
DRAWING:- OF SHEET:- 3 of 20

PROJECT:- FR 062-5(2)

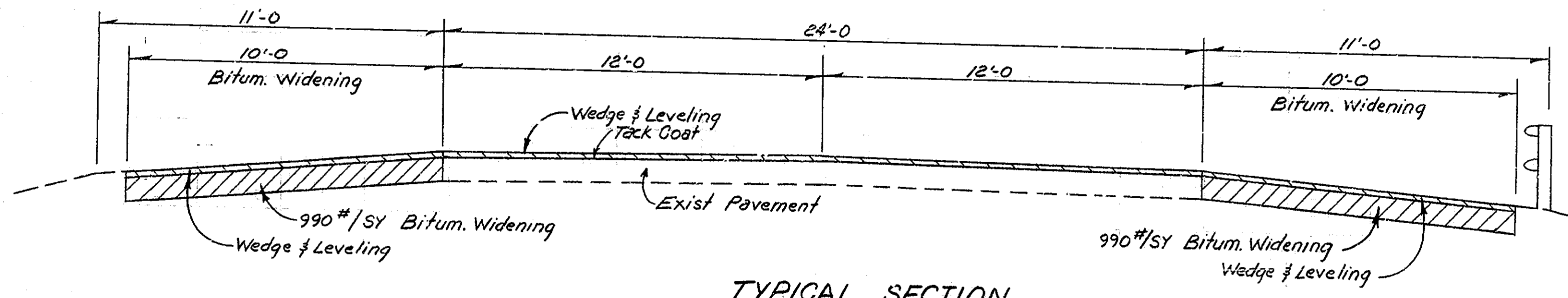
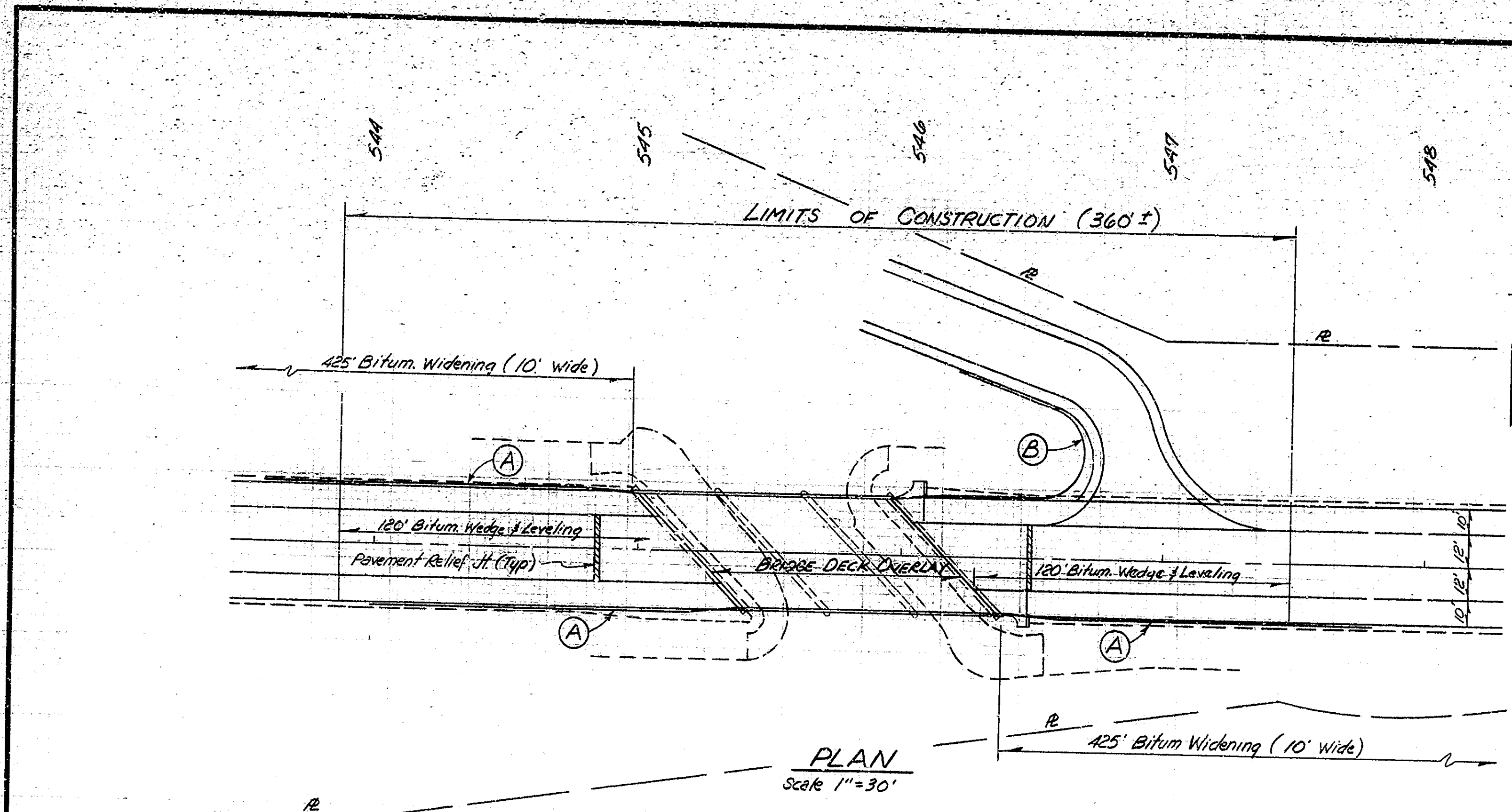
CONTRACT NO. B-14554

BRIDGE FILE:- 46-03-4175 A

DESIGNED: DJD CKD WMB  
DRAWN: DJD CKD WMB  
TRACED: CKD







**LEGEND**

- 3 x (A) 100 LF Guard Rail, Type D (Connect to Bridge Rail)  
Guard Rail End Treatment, Type I
- (B) 55 LF Guard Rail, Type D, (Connect to Bridge Rail)  
42 LF Guard Rail, Type D, Shop Curved (R=15')  
Guard Rail End Treatment, Type I

**MATERIAL NOTES**

- BRIDGE DECK OVERLAY**  
 1 3/4" Modified Portland Cement Concrete Overlay  
 OR  
 2 1/2" Dense Portland Cement Concrete Overlay  
 Includes 1/4" Scarifying (See Spec. Prov.)
- \*\* BITUMINOUS WEDGE AND LEVELING**  
 110 #/SY Bituminous Surface Type 11 B OVER  
 Variable depth Bituminous Binder or Bituminous Base
- BITUMINOUS RELIEF JOINT**  
 110 #/SY Bituminous Surface Type 11 B OVER  
 1870 #/SY Bituminous Base
- BITUMINOUS WIDENING**  
 990 #/SY Bituminous Base Type 5 D
- \*\* The maximum depth of Bituminous Surface Type 11 B shall not exceed 1 1/2".**

At all locations where total wedge thickness will exceed 1 1/2", bituminous binder or bituminous base shall be placed as a first course to within one inch of the finished grade.

**UTILITIES**

Public Service Indiana (Columbus, In)  
 Indiana Bell Telephone Co. (Columbus, In)

**TRAFFIC PROCEDURE**

1. Construct bituminous widening and other work to provide for traffic.
- PHASE I**
- A. Close south part of bridge and channel traffic on north part of bridge in accordance with details.
  - B. Complete construction on south part of bridge and approaches.
- PHASE II**
- A. Close center part of bridge and channel traffic on north and south parts of bridge in accordance with details.
  - B. Complete construction on center part of bridge and approaches.
- PHASE III**
- A. Close north part of bridge and channel traffic on south part of bridge in accordance with details.
  - B. Complete construction on north part of bridge and approaches.

**CONSTRUCTION PROCEDURE**

1. Scarify the bridge floor 1/4 inch as noted on General Plan. Remove scarified material and dust.
2. Remove concrete for overlay dams as shown on details.
3. Remove all existing deck patches and all deteriorated concrete around reinforcing and along curbs inaccessible to scarifying equipment by handchipping and cleaning in accordance with the Special Provisions.
4. Repair the Overlay Dams to the level of scarification as shown on the plans.
5. Blast and clean all repaired deck areas and all removal and scarified areas.
6. Place the Bridge Deck Patching and Bridge Deck Overlay as shown on the Plans and in accordance with Special Provisions. Install Expansion Joints.
7. All Surface Seal to be paid for as Lump Sum. Clean and seal all concrete area from gutter to bottom of girder (includes curbs, walks, concrete railing, and coping) as shown on the Plans. Clean and seal top of exposed Overlay Dams. Estimated quantity of surface seal 1740 Sq. Ft.
8. Construct Pavement Relief Joints, bituminous wedges, and all other work shown on the plans including the removal and installation of the guard rail.

**BITUMINOUS SUMMARY**

Bituminous Wedge	75 T
Bituminous Leveling	75 T
Bituminous Widening	967 T
Temp Bitum. Widening	36 T
Bitum Relief Joint	10 T
<b>Total</b>	<b>1163 T</b>

**CONSTRUCTION PROCEDURE (Cont'd)**

The numbers do not necessarily indicate the sequence of operations.  
 Existing reinforcing to remain in place and extend into repaired concrete shall be cleaned and straightened.  
 All removal equipment used for partial concrete removal of bridge structures shall be hand held. Pneumatic hammers, 30 lbs maximum weight shall be used for all removal areas to be patched. Pneumatic hammers up to 90# maximum weight may be used for all other removals.

**LAYOUT**

**INDIANA DEPARTMENT OF HIGHWAYS**

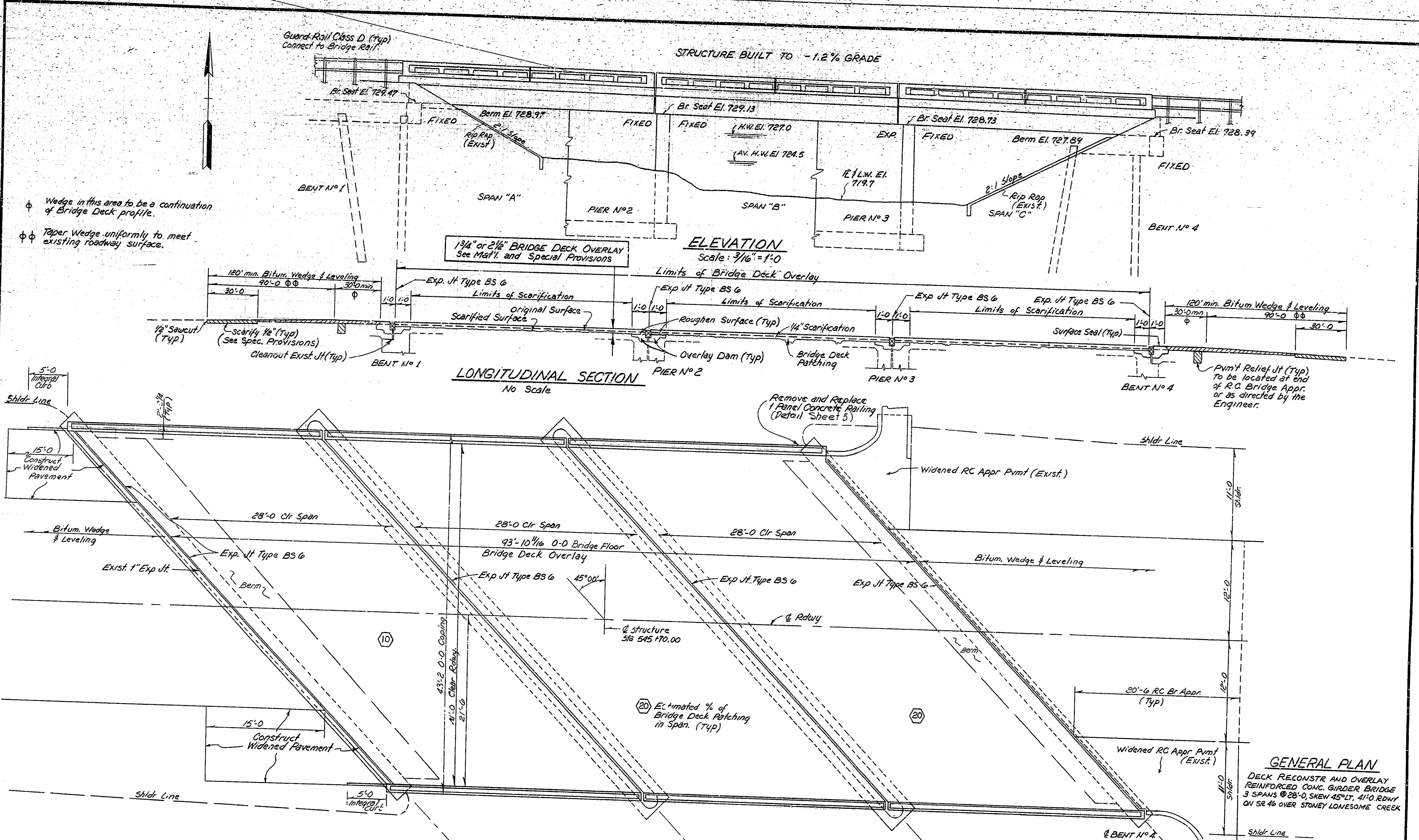
SCALE: - AS NOTED DATE: - JANUARY 12, 1984

SUBMITTED FOR APPROVAL: *Walter H. Bacon*

DRAWING: R1 OF 4 SHEET: 4 OF 20  
 PROJECT: FR062-51 )  
 CONTRACT NO. B-14554  
 BRIDGE FILE: 46-03-4175 A



DESIGNED	DJD	CKD	WMB
DRAWN	DJD	CKD	WMB
TRACED		CKD	



φ Wedge in this area to be a continuation of Bridge Deck profile.  
 φφ Taper Wedge uniformly to meet existing roadway surface.

**LONGITUDINAL SECTION**  
No Scale

**ELEVATION**  
Scale: 3/16" = 1'-0"

**PLAN**  
Scale: 3/16" = 1'-0"

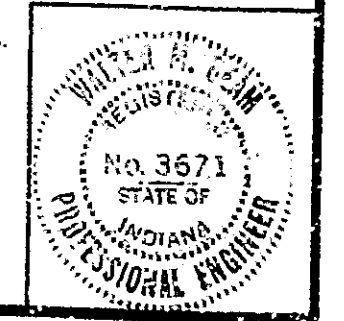
**GENERAL PLAN**  
DECK RECONSTR AND OVERLAY REINFORCED CONC GIRDER BRIDGE 3 SPANS @ 28'-0", SKEW 45° LT, 41'-0" RDWY ON SR 46 OVER STONEY LONESOME CREEK

**INDIANA DEPARTMENT OF HIGHWAYS**  
BARTHOLOMEW CO.

SCALE: AS NOTED DATE: JANUARY 12, 1984

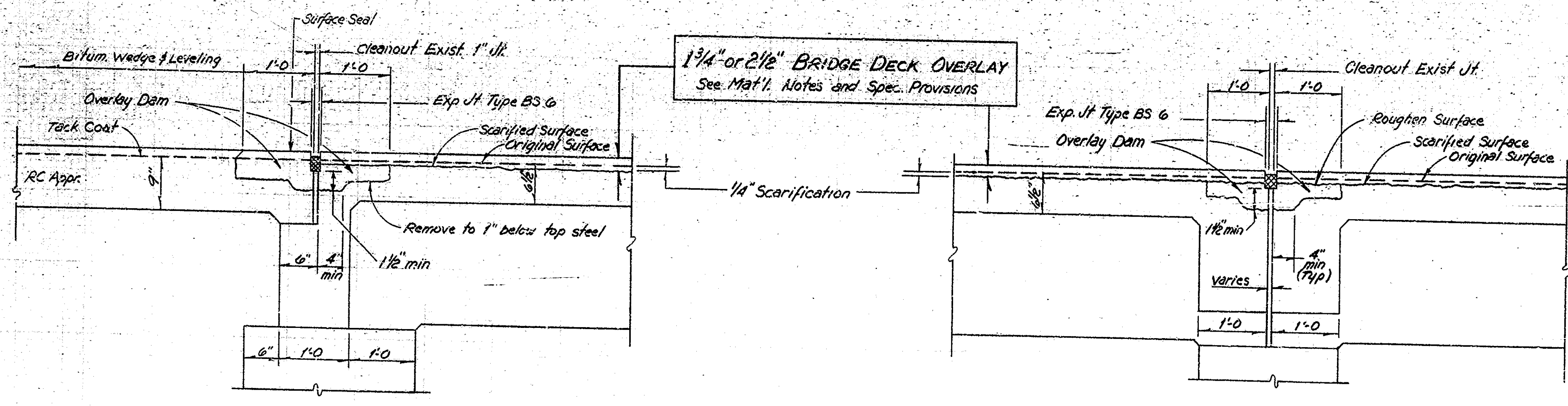
SUBMITTED FOR APPROVAL: *Walter J. Braun*

DRAWING: R2 OF 4 SHEET: 5 OF 20  
PROJECT: FR-062-5(3)  
CONTRACT NO. B-14554  
BRIDGE FILE: 46-03-4175 A



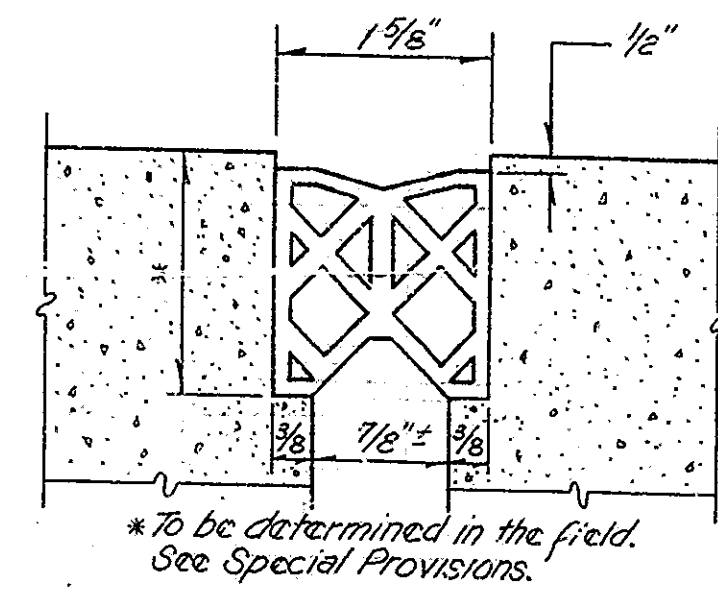
DESIGNED	DJD	C'KD	WMB
DRAWN	DJD	C'KD	WMB
TRACED		C'KD	



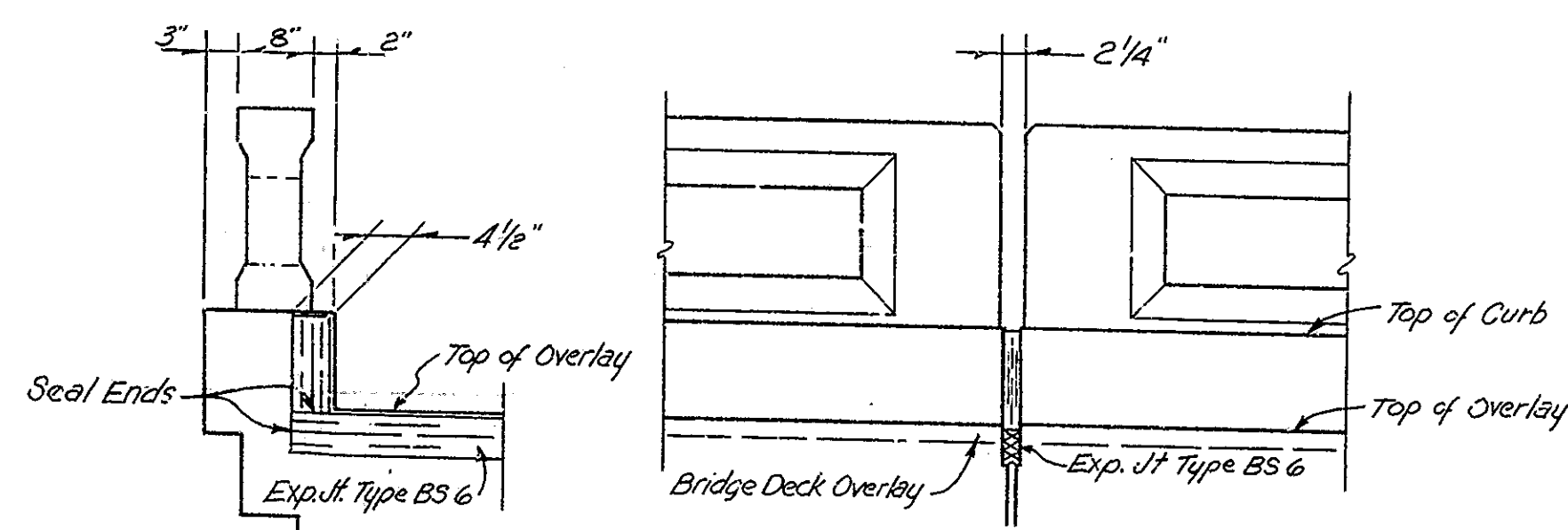


SECTION AT BENT NO 1 & 4  
Scale: 1" = 1'-0"

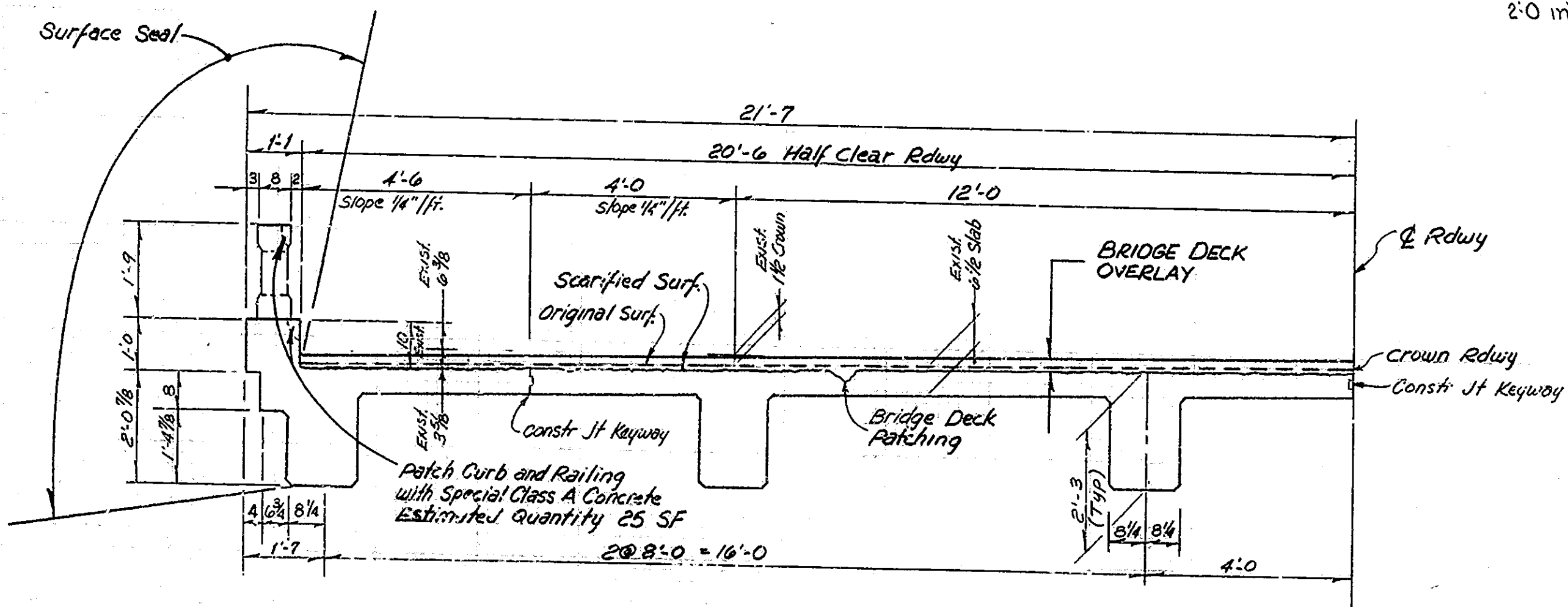
SECTION AT PIER NO 2 & 3  
Scale: 1" = 1'-0"



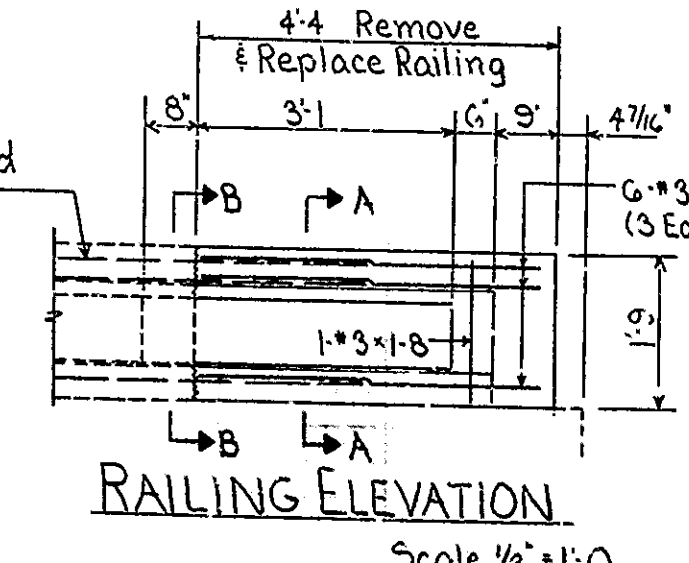
EXP. JOINT TYPE BS 6  
No Scale



TYPICAL BS JOINT INSTALLATION AT CURB  
No Scale

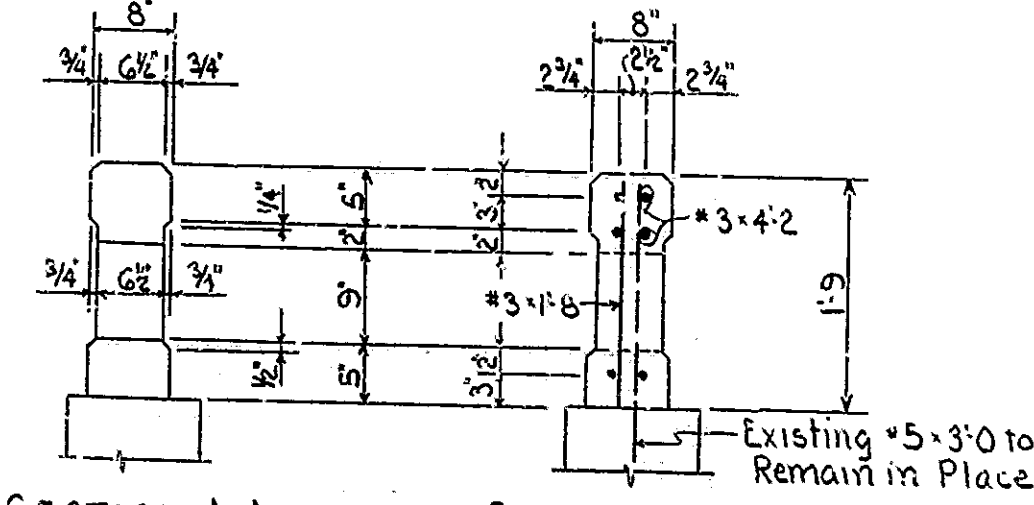


SECTION L to Q RDWY  
Scale: 1/2" = 1'-0"



RAILING ELEVATION  
Scale 1/2" = 1'-0"

BILL OF MATERIALS RAILING REINFORCING STEEL			
Size or Mark	Number of Bars	Length (FT)	Weight (LBS)
#3	6	4'-2"	
#3	2	1'-8"	
Total Reinforcing Steel			11#
Class C Concrete Railing			5LF



SECTION A-A SECTION B-B  
Scale 3/4" = 1'-0"

GENERAL NOTES

- Plans for the existing structure are on file in the Central Office as Bridge File 40-K-4175 and are available upon request.
- Where new work is to be fitted to old work, the Contractor shall check all dimensions and conditions in the field and report any errors or discrepancies to the Engineer and assume responsibility for their correctness and the fit of the new part to the old.
- The handchipping and cleaning of deteriorated deck areas shall be as directed by the Engineer. It is the intent of these plans that all such deteriorated concrete be removed and should there be any doubt as to the quality of the concrete, removal shall continue until PERFECTLY SOUND CONCRETE is exposed.
- Concrete in patches for deteriorated deck areas below scarified depth to be Modified Portland Cement Concrete or Special Class A Concrete. See Special Provisions.
- See Special Provisions for composition of concrete in overlay dams.
- All bituminous material required in this contract to be included in the pay item "Bituminous Mixture for Approaches" except Tack Coat will be paid for separately.
- The length and quantity of bituminous wedging shown on the plans is based on the thickness of Modified Portland Cement Concrete Overlay. See Special Provisions.
- Seal all joints and cracks in the approach pavement with hot poured joint sealer before placing the bituminous wedge. The cost of sealing is to be included in the cost of other items in the contract.

STANDARD DRAWINGS

Br. Std.	Rd. Std.	Purpose
C1		Reinforcing Bar Notes
Sheet A		Standard Pavement Joints
Sheet ME		
Sheet MT3		Traffic Signs
Sheet GR8		Steel Beam Guard Rail
Sheet GR10		Guard Rail Buried Ends
Sheet CB2		Temporary Concrete Barrier
Sheet 2A		Standard Detour Signs
Sheet 3		Standard Detour Signs
Sheet 3A		Standard Detour Signs
Sheet 4		Standard Detour Signs
Sheet 5		Sign Design Details

Note: For Reinforcing Bar Notes see Bridge Standard C1.

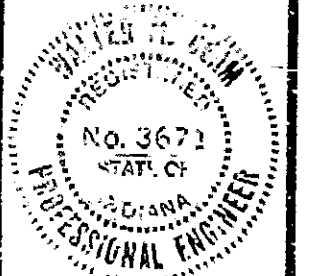
DETAILS  
INDIANA DEPARTMENT OF HIGHWAYS

SCALE: - AS NOTED DATE: - JANUARY 12, 1984

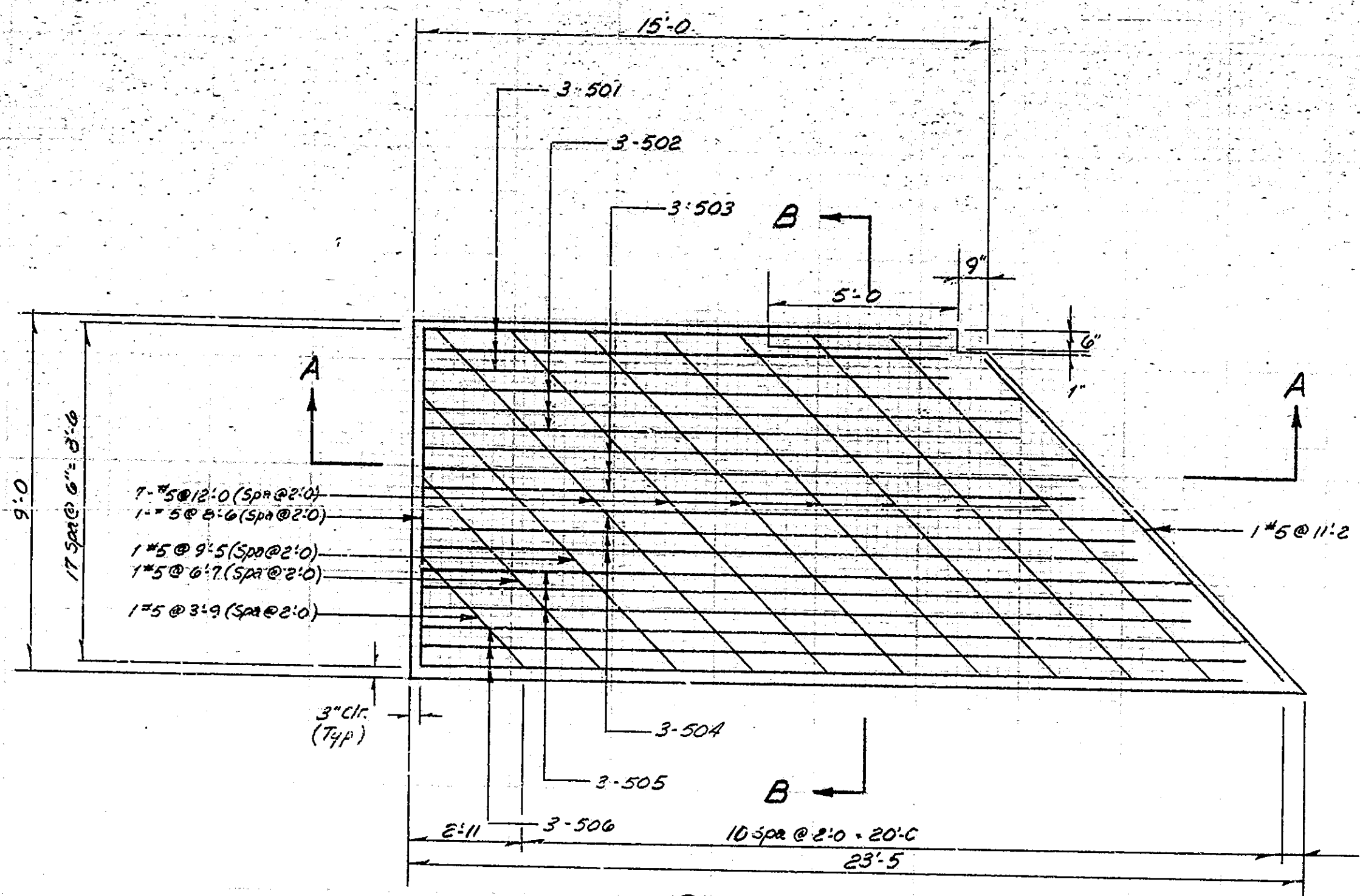
SUBMITTED FOR APPROVAL: *Nella M. Bann*

DESIGNED: DJD CWD WNS  
DRAWN: DJD CWD SS  
TRACED: CWD

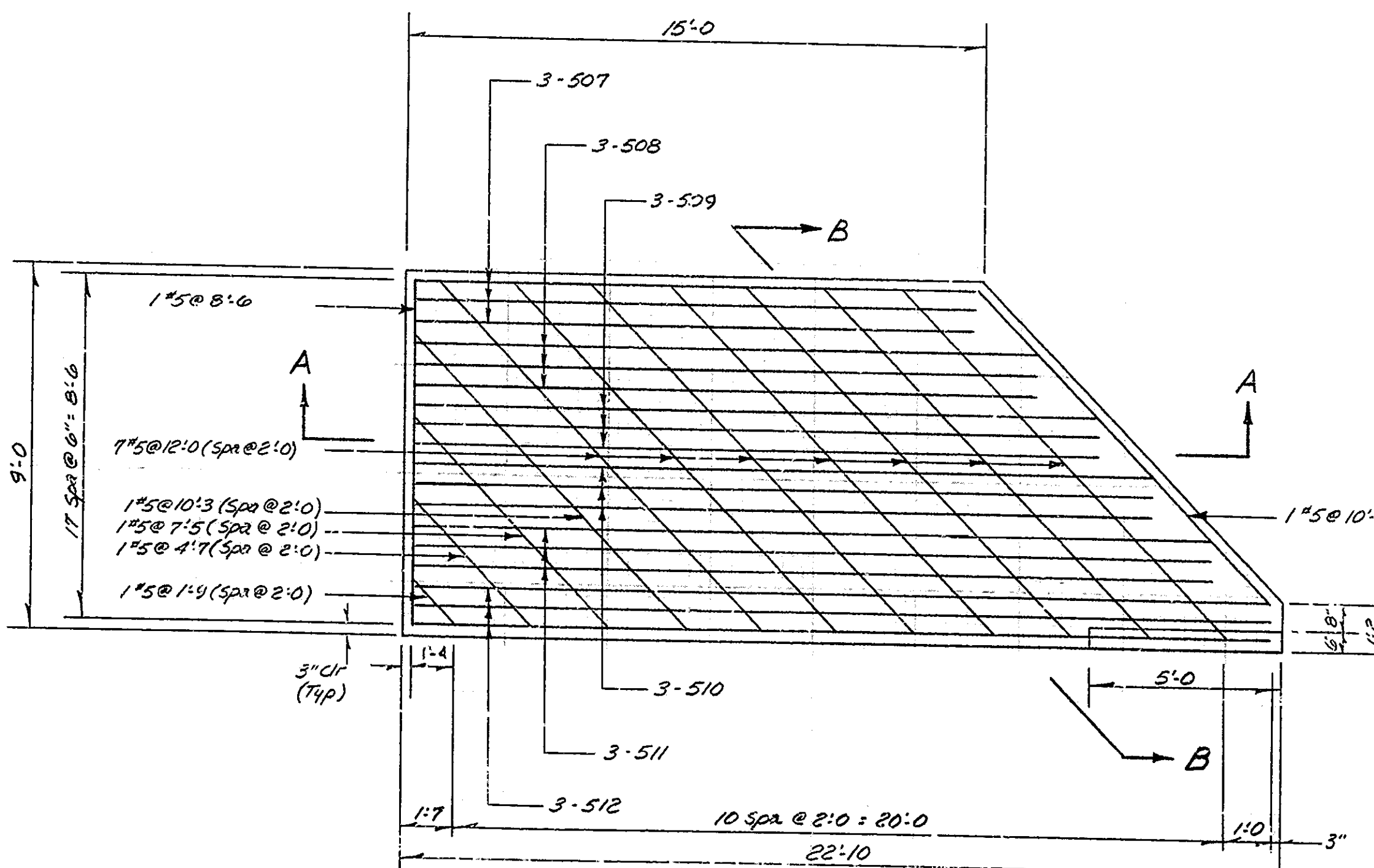
PROJECT: - R3 of 4 SHEET: - 6 of 20  
FR062-5(3)  
CONTRACT NO. B-14554  
BRIDGE FILE: - 40-03-4175 A



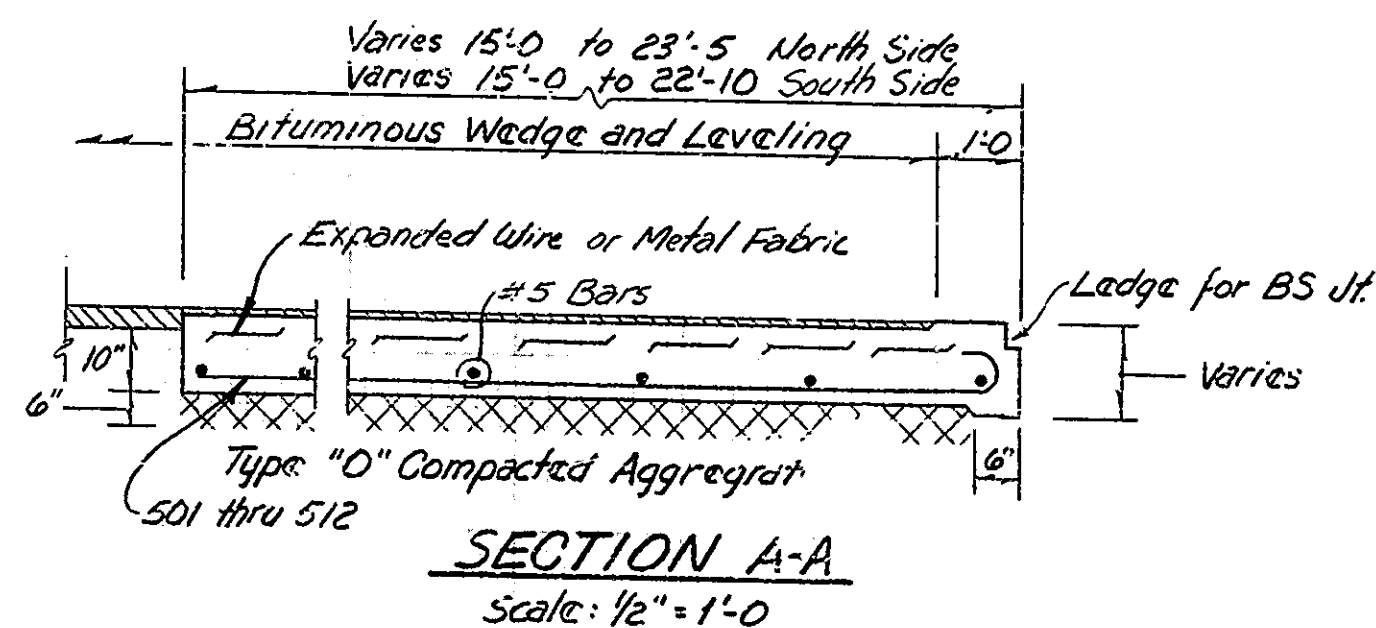




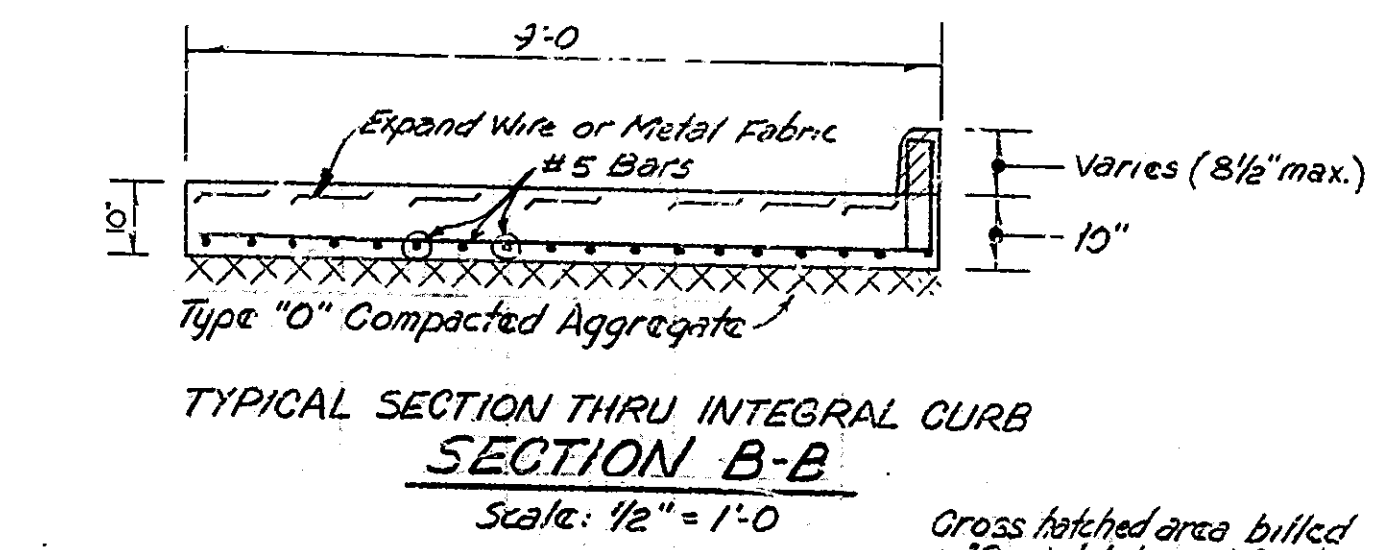
**PLAN (North Side)**  
Scale: 3/8" = 1'-0"



**PLAN (South Side)**  
Scale: 3/8" = 1'-0"



**SECTION A-A**  
Scale: 1/2" = 1'-0"



**SECTION B-B**  
Scale: 1/2" = 1'-0"

MARK	"A"	LENGTH
501	13.9	14.4
502	15.8	16.3
503	17.2	17.9
504	18.8	19.3
505	20.2	20.9
506	21.2	22.3
507	14.9	15.4
508	16.3	16.10
509	17.9	18.4
510	19.3	19.10
511	20.9	21.4
512	22.3	22.10

BILL OF MATERIALS			
R.C. APPROACH PVT.			
Total for 2			
REINFORCING STEEL			
Mark/Size	No Bars	Length	Weight
501	3	14.4	
502	3	16.3	
503	3	17.9	
504	3	19.3	
505	3	20.9	
506	3	22.3	
507	3	15.4	
508	3	16.10	
509	3	18.4	
510	3	19.10	
511	3	21.4	
512	3	22.10	
5	1	3.9	
5	1	6.7	
5	1	9.5	
5	1	11.2	
5	1	1.9	
5	1	4.7	
5	1	7.5	
5	1	10.3	
5	1	10.8	
5	2	8.6	
5	14	12.0	
Total Reinforcing			986 lbs
REINFORCED CONC PVT 10"			
North Side		19 Sys	
South Side		19 Sys	
INTEGRAL CURB			
Type 'O' Comp Agg Base		13 T	

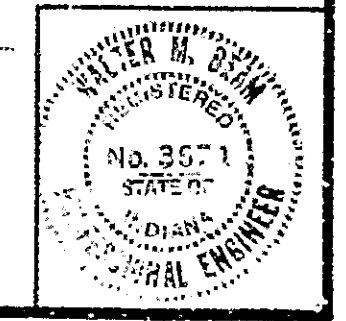
Note: For Reinforcing Bar Notes see Gr. Std. Cl.

**WIDENED R.C. APPROACH PVT.**  
**INDIANA DEPARTMENT OF HIGHWAYS**

SCALE: AS NOTED DATE: JANUARY 12, 1984

SUBMITTED FOR APPROVAL: *Walter McQueen*

DRAWING: R4 OF 4 SHEET: 7 OF 20  
PROJECT: FR062-5(3)  
CONTRACT NO. B-14554  
BRIDGE FILE: 46-03-4175 A



DESIGNED: DJD CWD WMB  
DRAWN: DJD CWD SS  
TRACED: CWD

Gross hatched area billed as "Special Integral Curb" (#4's @ 2'-0" o.c. to be included in the cost of Special Integral Curb)



STRUCTURE PAY ITEMS table with columns: CODE NO., DESCRIPTION, UNIT, STRUCTURE, TOTAL QUANTITY. Includes items like CONCRETE CLASS C IN SUPERSTRUCTURE, REINFORCING STEEL, BRONZE PLATES, CAST IRON DRAIN PIPE, RAILING, and OVERLAY DAM.

STRUCTURE PAY ITEMS table with columns: CODE NO., DESCRIPTION, UNIT, STRUCTURE, TOTAL QUANTITY. Includes items like TIMBER PILES FURNISHED, CONCRETE SLOPEWALL, RIPRAP, STEEL DRAIN PIPE, and BRIDGE DECK SURFACE.

APPROACH PAY ITEMS table with columns: CODE NO., DESCRIPTION, UNIT, STRUCTURE, TOTAL QUANTITY. Includes items like EXCAVATION FOR SUBGRADE, UNCLASSIFIED EXCAVATION, BORROW, REMOVAL OF PAVEMENT, CONCRETE CURB, and BITUMINOUS MIXTURE.

APPROACH PAY ITEMS table with columns: CODE NO., DESCRIPTION, UNIT, STRUCTURE, TOTAL QUANTITY. Includes items like PIPE GR.A (0.064" FBCCS), PIPE GR.D (0.064" CS), INLET TYPE, and PAVED SIDE DITCH.

APPROACH PAY ITEMS table with columns: CODE NO., DESCRIPTION, UNIT, STRUCTURE, TOTAL QUANTITY. Includes items like 47" FENCE, F. FIELD, CONSTRUCTION SIGNS, STOP SIGN, YIELD SIGN, and DELINEATOR.

REVISIONS table with columns: DATE, ITEM. A table for tracking changes to the estimate.

A. Includes 500 Lbs. of #5 reinforcing as an undistributed quantity to replace badly deteriorated deck reinforcing.
B. Estimated Quantity 1740 SF. See the Special Provisions.
C. Includes 160 SY for Approach Scarification.

SUMMARIZED BY SS C.K.D. W.M.B.
TRACED BY C.K.D.

MARCH 1982

BRIDGE ESTIMATE OF QUANTITIES
INDIANA DEPARTMENT OF HIGHWAYS

DATE JANUARY 12, 1984

Handwritten signature of M. A. M. B.

PROJECT FR-046-5(3)
CONTRACT NO. 5-14554
BRIDGE FILE: 46-03-4175A

SHEET 8 OF 20